

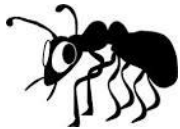


The work this week has been split into 1 star, 2 star and 3 stars. Have a go at the activity suited for you. Remember to send it into Class Dojo to earn yourself some Dojo points. There are some instructions at the bottom of this sheet to help you use the column method.


## Word Problems: Addition

\*  
—

1. Jack has 25 conkers and he finds another 17 conkers. How many conkers does Jack have altogether?
2. In the hall, there are 52 children. Another 29 children enter the hall. How many children are in the hall overall?
3. 67 children are in the swimming pool. An extra 24 children enter the swimming pool. How many children are in the swimming pool?  

4. 47 apples are on the ground. 13 apples fall to the ground from the apple tree. How many apples are on the ground?
5. In the library, there are 45 books. At lunch time, the children return 37 books. How many books are in the library after lunch?  

6. Scruffy the dog ate 67 bones and then an extra 34 bones. How many bones did Scruffy the dog eat?
7. My dad gave me 36p and my mum gave me 66p. How much do I have altogether?
8. There are 59 ants marching in a line. 34 ants join the line and start marching. How many ants are marching in total?  

9. There are 31 apples and 49 pears in the bowl. How many fruits are there in total?
10. There are 36 ducks and 35 swans on a lake. How many birds all in all?

## Word Problems: Addition

\*\*/\*\*  
—

1. 627 children are in the swimming pool. An extra 44 children enter the swimming pool. How many children are in the swimming pool in total?  

2. There are 134 children in Year 3 and 37 children in Year 4. How many children are there in Years 3 and 4?

3. In my lunchbox I have a sandwich and an apple. My sandwich weighs 378g and my apple weighs 103g. What is the weight of my lunchbox?

4. There were 433 people on the train at Orpington station. 68 people entered the train at Bromley station. How many people were on the train altogether?

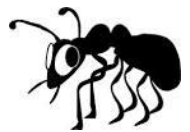
5. In the library, there are 442 books. At lunch time, the children return 79 books. How many books are in the library after lunch?



6. A TV costs £735 and a Playstation costs £195. How much money would I need to buy both items?

7. Emily bought chips for 452p and a drink for 269p. How much did it cost altogether?

8. There are 545 ants marching in a line. 76 ants join the line and start marching. How many ants are marching in total?



9. A plant was 127cm tall on Monday and grew 83cm in a week. How tall was the plant in a week's time?

10. An orchard contains 235 apple trees, and 186 pear trees. How many trees are there in the orchard?

### Word Problems: Addition

\*\*\*

1. 1627 children are in the swimming pool. An extra 284 children enter the swimming pool. How many children are in the swimming pool in total?



2. There are 2134 children in Year 3 and 278 children in Year 4. How many children are there in Years 3 and 4?

3. In my lunchbox I have a sandwich and an apple. My sandwich weighs 1378g and my apple weighs 138g. What is the weight of my lunchbox?

4. There were 2423 people on the train at Orpington station. 388 people entered the train at Bromley station. How many people were on the train altogether?

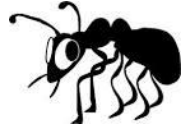
5. In the library, there are 5442 books. At lunch time, the children return 769 books. How many books are in the library after lunch?



6. A TV costs £834, a Playstation costs £195 and a game costs £25. How much money would I need to buy all three items?

7. Emily bought chips for 456p, a drink for 195p and chocolate bar for 110p. How much did it cost altogether?

8. There are 3525 ants marching in a line. 327 male ants and 562 female ants join the line and start marching. How many ants are marching in total?



9. A plant was 2127cm tall on Friday. The plant grew 331cm on Saturday and 426cm on Sunday. How tall was the plant on Monday?

10. An orchard contains 3235 apple trees, 172 pear trees and 53 orange trees. How many trees are there in the orchard?

### Column method for addition

\*

#### Steps to success:

- 1) **RUCSAC:** Read, underline, calculate, solve, answer and check.
- 2) Place the digits in the correct column.
- 3) Show the addition and equal sign.
- 4) Add the units column first.
- 5) Carry into the tens column underneath the bottom line.
- 6) Add the tens column.

### Column method for addition

\*\*

#### Steps to success:

- 1) **RUCSAC:** Read, underline, calculate, solve, answer and check
- 2) Place the digits in the correct column.
- 3) Show the addition and equal sign
- 4) Add the units column first.
- 5) Carry into the tens column underneath the bottom line if you need to.
- 6) Add the tens column.
- 7) Carry into the hundreds column underneath the bottom line if you need to.
- 8) Add the hundreds column.

### Column method for addition

\*\*\*

#### Steps to success:

- 1) **RUCSAC:** Read, underline, calculate, solve, answer and check
- 2) Place the digits in the correct column.
- 3) Show the addition and equal sign
- 4) Add the units column first.
- 5) Carry into the tens column underneath the bottom line if you need to.
- 6) Add the tens column.
- 7) Carry into the hundreds column underneath the bottom line if you need to.
- 8) Add the hundreds column.
- 9) Add the thousands column.

**\* ANSWERS:**

- 1) 42
- 2) 81
- 3) 91
- 4) 60
- 5) 82
- 6) 101
- 7) 102
- 8) 93
- 9) 80
- 10) 71
- 11) 65
- 12) 91
- 13) 82
- 14) 91
- 15) 51

**\*\*\* ANSWERS:**

- 1) 1911
- 2) 2412
- 3) 1516
- 4) 2811
- 5) 6211
- 6) 1054
- 7) 761
- 8) 4414
- 9) 2884
- 10) 3460
- 11) 1651
- 12) 2913
- 13) 4025
- 14) 2926
- 15) 6352

**\*\***

- 1) 671
- 2) 171
- 3) 481
- 4) 501
- 5) 521
- 6) 930
- 7) 721
- 8) 621
- 9) 210
- 10) 421
- 11) 1221
- 12) 1516
- 13) 1924
- 14) 1820
- 15) 3112